



FACTSHEET

2016

A WWF-SIGHT screenshot showing extractive concessions over parts of Africa

WWF-SIGHT

INTEGRATING SPATIAL DATA TO GUIDE LAND USE PLANNING, POLICY AND INVESTMENT

VISION

To improve decision making through easy access to integrated spatial information and analysis prior to or early in the project life-cycle, leading to reduced environmental and social risk and more sustainable investment and development.

WWF-SIGHT is an online mapping platform which integrates key development (e.g., extractives, infrastructure, agriculture and forestry) and environmental datasets. Uniquely, WWF-SIGHT provides an up to date and reliable means of visually comparing development projects and activities against key social and environmental metrics almost anywhere on Earth.

WWF-SIGHT enables governments, companies, investors and civil society to understand the potential environmental and social impacts of human development. Its ultimate goal is to protect the natural world by managing risk and guiding sustainable land use planning, policy and investment.

The diagram below outlines the principal datasets and functions of the platform.

DATA

Infrastructure

(e.g. roads, railways, airports)

Development

(e.g. extractive, agriculture, infrastructure, forestry)

Natural Environment

(e.g. protected areas, species distribution, WWF priority areas)

Satellite Imagery

(Other non-registered developments)

Environmental and Social Indices

(Human Development Index, Water Risk Index)

FUNCTION



Search - Search for any term of interest - such as a specific project, extractive commodity or company.



Compare - Select and superimpose any of the datasets within WWF-SIGHT placing developments into context, against selected environmental variables of interest.



Analyse - Utilise inbuilt functions to conduct basic spatial analysis. Alternatively, export data for further research.



Evidence - With one click generate a PDF report summarising environmental and social risk factors for any location, user defined area, asset (i.e., extractive concessions) or company.

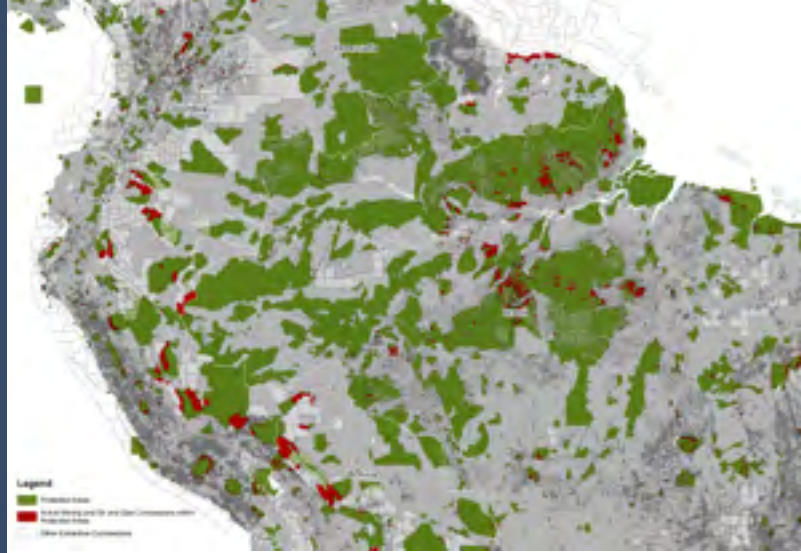


Alert - Use the platform to receive automatic email notifications of any concession related changes within a predefined area of interest.



Predict (In development) - Use the predictive datasets to gain a better understanding of the longer term environmental and social risk factors for a specific project or company.

A WWF-SIGHT output showing extractive concessions overlapping (RED) protected areas (GREEN) in the Amazon Biome.



UNIQUE FEATURES OF WWF-SIGHT

- Access to integrated development and environmental spatial datasets, framed in an intuitive, easy to use platform which does not require technical experience.
- Near-real time data
- Data can be exported from WWF-SIGHT as map images or in a tabular format as required.
- An inbuilt report generator allows users, with one click, to create a PDF report for a user defined area, a specific development or an aggregate of a company's holdings by sector (in development) to provide an overview of the associated environmental and social risks.
- Unique, cutting edge datasets and indices developed in collaborations with world leading research institutions, such as the University of Oxford.

WWF-SIGHT FACILITATES

Improved Awareness. WWF-SIGHT is an adaptable platform from which it is possible to consider proposed or existing development projects against a diverse range of environmental and social variables. WWF-SIGHT provides much needed early intelligence on development activities, fundamental for informing robust land-use planning, policy and investment.

Increased Understanding. WWF-SIGHT enables investors to rapidly and consistently evaluate the environmental and social conflicts of specific developments or an aggregate of a company's holdings by sector. WWF-SIGHT provides, for example, investors with a rapid method of accessing a company's likely environmental risk exposure and operational compliance to guidelines such as the GRI G4.

Greater Transparency. By improving data transparency WWF-SIGHT aims to help highlight the wider social and environmental costs of unsustainable development fostering greater accountability for governments, companies and investors.

WWF-SIGHT DELIVERS RESULTS

WWF-SIGHT delivers results, some of which have produced international media coverage.

Improving Institutional Capacity

WWF-SIGHT provides WWF's global network with the capacity to quickly resolve complex questions; from simple spatial mapping to understanding development conflicts in the Amazon Biome.



Supporting world leading research

WWF-SIGHT has been central in supporting flagship scientific research. Recently, WWF-SIGHT enabled a global assessments of extractive activities within natural World Heritage Sites.

NEXT STEPS

We have successfully developed WWF-SIGHT. In the coming months, we will expand our scientific collaborations and improve the platform's data coverage and functionality.

During this time, we will be seeking guidance from companies, investors and civil society to ensure WWF-SIGHT meets the needs of different users.

If you are interested in supporting the refinement of WWF-SIGHT, or would like to learn more please get in touch.

FOR MORE INFORMATION

Dr Susanne Schmitt

Extractives and Infrastructure Manager, WWF-UK
sschmitt@wwf.org.uk | +44 (0)7759814841

Paolo Tibaldeschi

Senior Environment and Development Advisor, WWF-Norway
ptibaldeschi@wwf.no | +47 (0) 93 41 98 38