



WWF

UNITED KINGDOM

GLOBAL[®]
FOREST
& TRADE
NETWORK



WWF GFTN-UK NEWSLETTER

WINTER 2011 / 2012

FSC® online training:

FSC UK has been contracted by GFTN-UK to provide training services to its members as part of their membership benefits. A profile has been created for members on the FSC UK online training portal at <http://training.fsc-uk.org>. If you have any questions relating to this service, email FSC UK's Tallulah Chapman: tallulah@fsc-uk.org

Do you have any members of staff you want us to thank?

We'd like to send a 'thank you' to members of staff who are doing a great job helping you deliver your organisation's procurement policy. Just email names you'd like to nominate and the reasons why, to James Horne at jhorne@wwf.org.uk

More members' stories needed!

We want to include more member successes in the Spring 2012 newsletter. If you'd like to contribute, contact James Horne: jhorne@wwf.org.uk

Member feedback

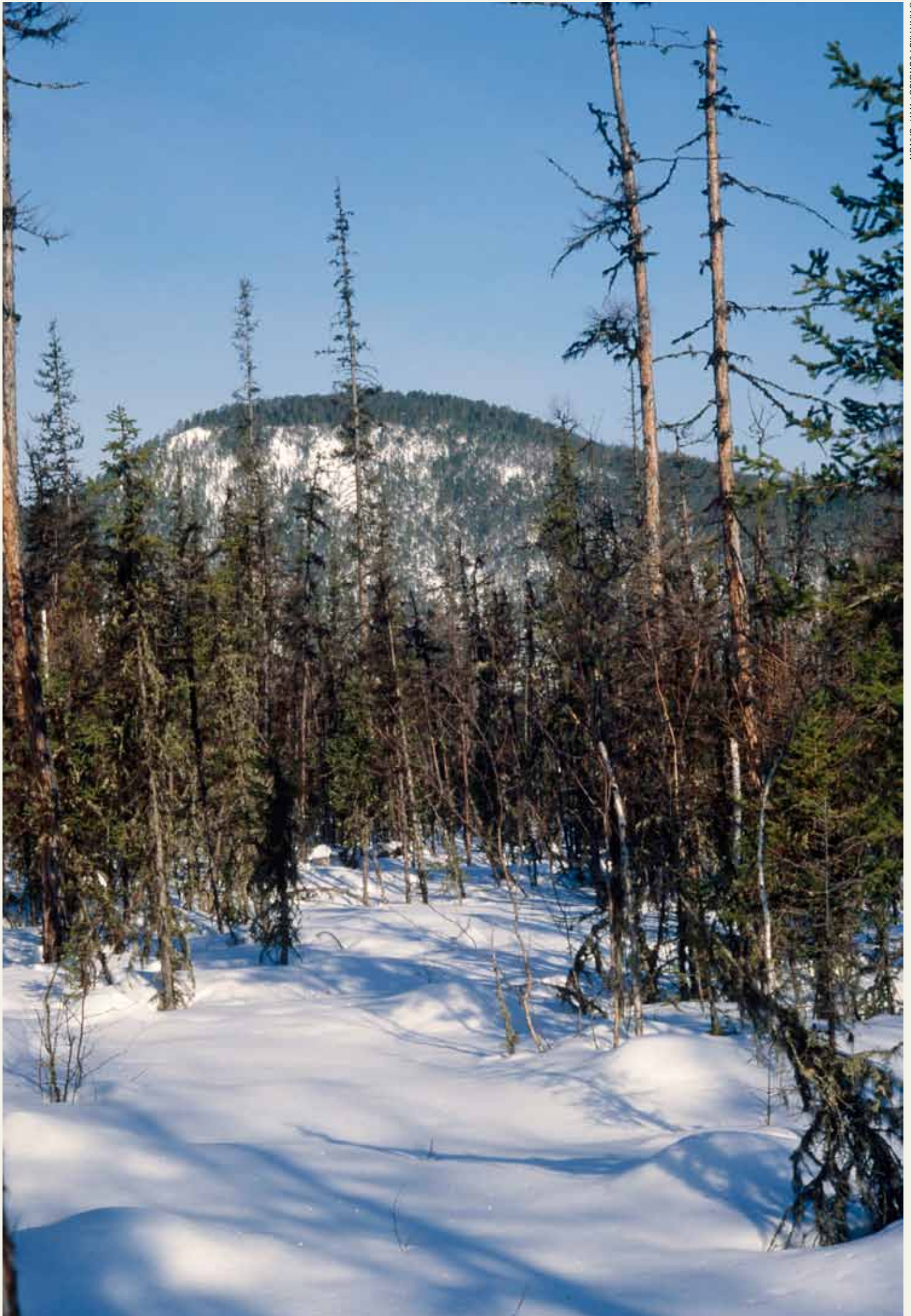
If you have suggestions or feedback about this newsletter, or the WWF GFTN-UK website, we'd like to hear from you. Contact James Horne: jhorne@wwf.org.uk

FSC Friday

This year's FSC Friday will be 28 September. For information on how you can get involved, call FSC UK on 01686 413916.

CONTENTS

GFTN-UK MEMBER NEWS STORIES	05
<hr/>	
FEATURE:	
What graduating from GFTN-UK means to its participants	06
<hr/>	
NEW GFTN PARTICIPANTS	08
<hr/>	
WWF GFTN NEWS	09
<hr/>	
OTHER WWF/FORESTS NEWS	12
<hr/>	
GFTN AT A GLANCE	17
<hr/>	
FSC GLOBAL UPDATES	19
<hr/>	
USEFUL WWF DOCUMENTS AND REPORTS	19
<hr/>	
USEFUL WEBSITES	21



GFTN-UK MEMBER NEWS STORIES

B&Q completes GFTN journey

B&Q's participation in what is now GFTN-UK has drawn to a close in the GFTN's 20th anniversary year, following the transformation of the retailer's supply chain for timber products – a journey it began with GFTN-UK in 1991.

B&Q has worked continuously to transform the source of forest goods that customers can find in its stores, having embedded best practice sourcing in

the business. It's a fantastic achievement, with B&Q having provided a consistent message to producers, suppliers and customers alike that the business can and will remain committed to sourcing responsibly.

B&Q, which helped found the Forest Stewardship Council in the early 1990s, will continue to play a key role in achieving responsible forest trade, and at WWF we look forward to finding new ways to engage with the company and the Kingfisher Group in the near future.

Julia Young, manager of GFTN-UK, said, "I want to thank B&Q for their long-term work, for supporting producers and suppliers in forest countries where change is most needed, and for their willingness to communicate this commitment to UK customers."



Sarah Broadley,
Chain of Custody manager,
Jewsons

Jewson beats timber certification targets

Jewson has exceeded its timber certification target for 2011 by more than 10%. Certified timber levels were 66% in 2007, rising to 90.8% last year.

The merchant said that about 92-93% of its timber products were now chain of custody certified, against a target in its five-year plan of 81% for 2011. Its current proportion of certified products also matches the target for 2013 – this figure includes 98% of softwood imports into International Timber which are certified to either PEFC or FSC. The entire Jewson network of 500-plus branches is certified to sell products with chain of custody, thus ensuring that they are sourced from legal and well managed sources.

Sarah Broadley, Chain of Custody manager, said the ultimate aim was for Jewson to have as near as possible to 100% of its timber products certified by March 2013 when the EU Timber Regulation (EUTR) is implemented. This will criminalise the import of illegally-logged wood products, and will exceed the requirements of the EU regulation which demands that only timber products within scope are legally sourced.

All those involved in procuring timber or timber-based products are included in regular updates regarding the requirements of compliance with the Regulation. There is an absolute commitment in Saint-Gobain Building Distribution (SGBD) to take whatever steps are needed to make sure of compliance with the new regulations. Jewson and International Timber procurement teams responsible for any product falling within the scope of the EU regulation will be working closely with their supply chain to ensure compliance.

SGBD's International Timber business, as an importer, is likely to be placing timber products on the market for the first time as stipulated under the ETR, and will therefore be liable for the legality of imported timber products.

FEATURE: WHAT GRADUATING FROM GFTN-UK MEANS TO ITS PARTICIPANTS

The Co-operative Foods' Graduation Day

One Friday in December, I was sitting in the office with my thoughts turning to weekend plans, when an email arrived from Julia Young: "It's official! The Co-operative Food graduates from GFTN-UK". Elation washed over me as the email was forwarded around the business and the congratulations were returned.

The Co-operative joined WWF's 95+ group in 1996, and we have focused strongly on forest sustainability ever

since. Initially, we set policies and strategies for the business to ensure an achievable step-by-step plan. The early years revolved around informing and engaging our employees, as well as our suppliers. This was a relatively straightforward task, given the values and principles of The Co-operative Group and its employees, which ensured this vision was easier for us to drive through the business than it would have been for other businesses.

Because many suppliers had not yet considered sustainable sourcing, and additional cost implications were a concern, progression was gradual during the early years. Despite the hurdles, The Co-operative's first FSC-accredited product, wooden kitchenware, was launched in 1999.

By 2007, FSC had gained much wider recognition and the green agenda was growing strongly in the retail sector. Because of these changes, more suppliers were looking at producing products using sustainable materials. A collaborative approach from producers, suppliers and retailers, engendered by the GFTN, was paying dividends.

During this time, The Co-operative was also sourcing sustainable materials for till rolls, letter-headed paper and business cards. The Co-operative Group's bank, pharmacy and funeral businesses were playing their part too, with FSC-accredited chequebooks, recycled prescription bags and even FSC-accredited coffins.

All The Co-operative's wood and paper-based products including toilet tissue, kitchen towel, charcoal, Christmas cards and wrapping paper, are responsibly sourced, helping to protect the world's forests and minimise environmental impact. The move underpins The Co-operative's wider commitment to sustainability following the launch of its groundbreaking Ethical Plan last year.

After receiving Julia's email, I popped the FSC cork out of a bottle of Co-operative Fairtrade wine and my thoughts moved from joy to determination. What now? How do we move the small remaining percentage of own-brand products to FSC certified? How do we ensure all outer packaging is credibly certified? How do we continue to communicate the message to as many people as possible? How can we help drive change more effectively? And, most important, how can we use our knowledge to move forest sustainability to become the norm in the wood and paper industry? So, you see, the achievement of graduate status isn't the end of the journey; it's just the beginning for The Co-operative.

And congratulations to Pureprint Group who have recently graduated from WWF GFTN-UK as well!

Pureprint Group, a leading player in award-winning responsible printing in the UK, has had a long-standing commitment in educating our customers on sustainability issues as well as assisting with the appropriate choice of inks and paper in order to minimise environmental impact. We have also introduced the 'carbon-neutral



by Phil Penny, Co-operative Food's Technical Manager

publications' service in association with the Carbon Neutral Company, which allows clients to offset the carbon footprint of their publications.

Julia Young, manager of GFTN-UK, said, "Pureprint Group understands the impacts its business and services have on the environment, and it is committed to helping customers make the best choices for their printing. Pureprint is a respected voice in the industry on how to mainstream responsible paper and print. I am very pleased to be able to confirm it has graduated from GFTN this year, and look forward to our continuing partnership to engage and influence others in the sector".



Mark Hanford, CEO of Pureprint Group, receiving a GFTN-UK graduate certificate from Julia Young, WWF GFTN-UK Manager

NEW GFTN PARTICIPANTS

GFTN-VIETNAM:

Vinh Long Joint Stock Company

Vinh Long Joint Stock Company joined GFTN-Vietnam in December. It manufactures rattan products such as baskets, bags and furniture, and makes products from bamboo and wood. For more information, visit

www.vinhlong.com.vn

Quoc Thang

Quoc Thang joined GFTN-Vietnam in December, and is a manufacturer specialising in indoor and outdoor furniture. Its main markets are the EU and Australia. For more information, visit http://gftn.panda.org/about_gftn/current_participants/gftn_members.cfm?country=Vietnam&countryid=12

Happy Furniture Company

Happy Furniture Company, a manufacturer of indoor and outdoor furniture, joined GFTN-Vietnam in December 2011. Its main markets include the EU, Australia and the US. For more information, visit <http://happyfurniturevn.com>

GFTN-CHINA:

Der International Home Furnishing

Der International Home Furnishing, which joined GFTN-China in December, is a flooring manufacturer. For more information, visit www.der.com.cn

Zhejiang Shiyou Timber

Zhejiang Shiyou Timber joined GFTN-China in December, and is a manufacturer of laminate and engineered flooring. For more information, visit:

www.shiyouflooring.com

China Vanke

China Vanke joined GFTN-China in December. Founded in May 1984, it is currently the largest professional housing developer in China. For more information, visit

<http://main.vanke.com/en/newstext.aspx?id=97&u>AboutVankeNav>

Nanjing Homenice Wood

Nanjing Homenice Wood, a flooring manufacturer, joined GFTN-China in December.

For more information, visit http://gftn.panda.org/about_gftn/current_participants/gftn_members.cfm?country=China&countryid=8

Scholar Home (Shanghai) new material technology

Scholar Home is a flooring manufacturer, and joined GFTN-China in December 2011.

Founded in 2005, its product range covers solid and engineered wood, laminates, bamboo flooring and related accessories. Its factory, which employs 200 workers, is in Shanghai and the annual production capacity is 5 million square meters. For more information, visit http://gftn.panda.org/about_gftn/current_participants/gftn_members.cfm?country=China&countryid=8

See all the GFTN participants at:

www.gftn.panda.org/about_gftn/current_participants/

New online guide for 'green' paper purchasing

WWF has launched a new online guidance for responsible paper buyers. The site – <http://checkyourpaper.panda.org/paperbuyingtips> – has been developed for purchasers who want an overview of what they can do to help protect forest biodiversity, the natural environment and human rights.

The 'six steps to responsible purchasing' summarises all tips and tools developed by WWF on how buyers can make 'green' paper choices and work with their suppliers towards reducing the environmental footprint of paper production and consumption. The online guide was launched just prior to Paperworld, one of the world's largest paper product conferences, which was held in Frankfurt at the end of January.

GFTN briefing note on the EU Timber Regulation (EU TR)

The GFTN has produced a briefing note to explain what the EU TR is, who's affected and how, and guidance on how compliance might be achieved in the longer term. You'll find the EU TR briefing note on the GFTN website: http://gftn.panda.org/practical_info/legality/

Praise for Sabah's forestry policy

From New Straits Times, Malaysia: Sabah is fast becoming a trailblazer in sustainable forest management. This is evident from the numerous accolades, notably from the United Nations, WWF Malaysia, Forest Stewardship Council (FSC) and the Prince Charles Charity, for the success of its forest conservation efforts. Read more at: www.nst.com.my/opinion/columnist/praise-for-sabah-s-forestry-policy-growing-popular-1.25871

Exporting in a shifting legal landscape – the US Lacey Act

The GFTN and TRAFFIC, the wildlife monitoring network, have launched a new multi-language online training module to increase awareness about the amended US Lacey Act, and to help ensure its compliance among exporters to the US. To find out more, visit www.traffic.org/home/2011/12/14/exporting-in-a-shifting-legal-landscape-the-us-lacey-act.html

WWF critiques EU Ecolabel on controversial products

The award of the EU Ecolabel to two photocopy papers of Pindo Deli, a subsidiary of Asia Pulp and Paper, has triggered questions and raised concerns among NGOs and buyers committed to sustainable forest management. Read more at: <http://gftn.panda.org/newsroom>

Massive APP greenwash campaign is mostly hogwash, says new report

The Senepis Tiger Sanctuary – a prominent feature of the massive international greenwash campaign of paper giant Asia Pulp & Paper – is being subjected to clear cutting operations by one of the company's wood suppliers, an investigation by WWF and its partners finds. Download the report at wwf.panda.org/wwf_news/?202809/Massive-APP-greenwash-campaign-is-mostly-hogwash-finds-new-report

Is cocoa cultivation compatible with sustainable forest management?

A project which increases the production of cocoa cultivation that will boost farm incomes is being implemented in 15 communities around the Suhuma forest reserve in western Ghana. Read more at <http://gftn.panda.org/newsroom>

Seeing the trees, not the wood

George White, Head of GFTN, contributed to a panel discussion at the Global Business of Biodiversity Symposium in London on 28 November. You can read more at <http://gftn.panda.org/newsroom>

Deforestation could be stopped by 2020

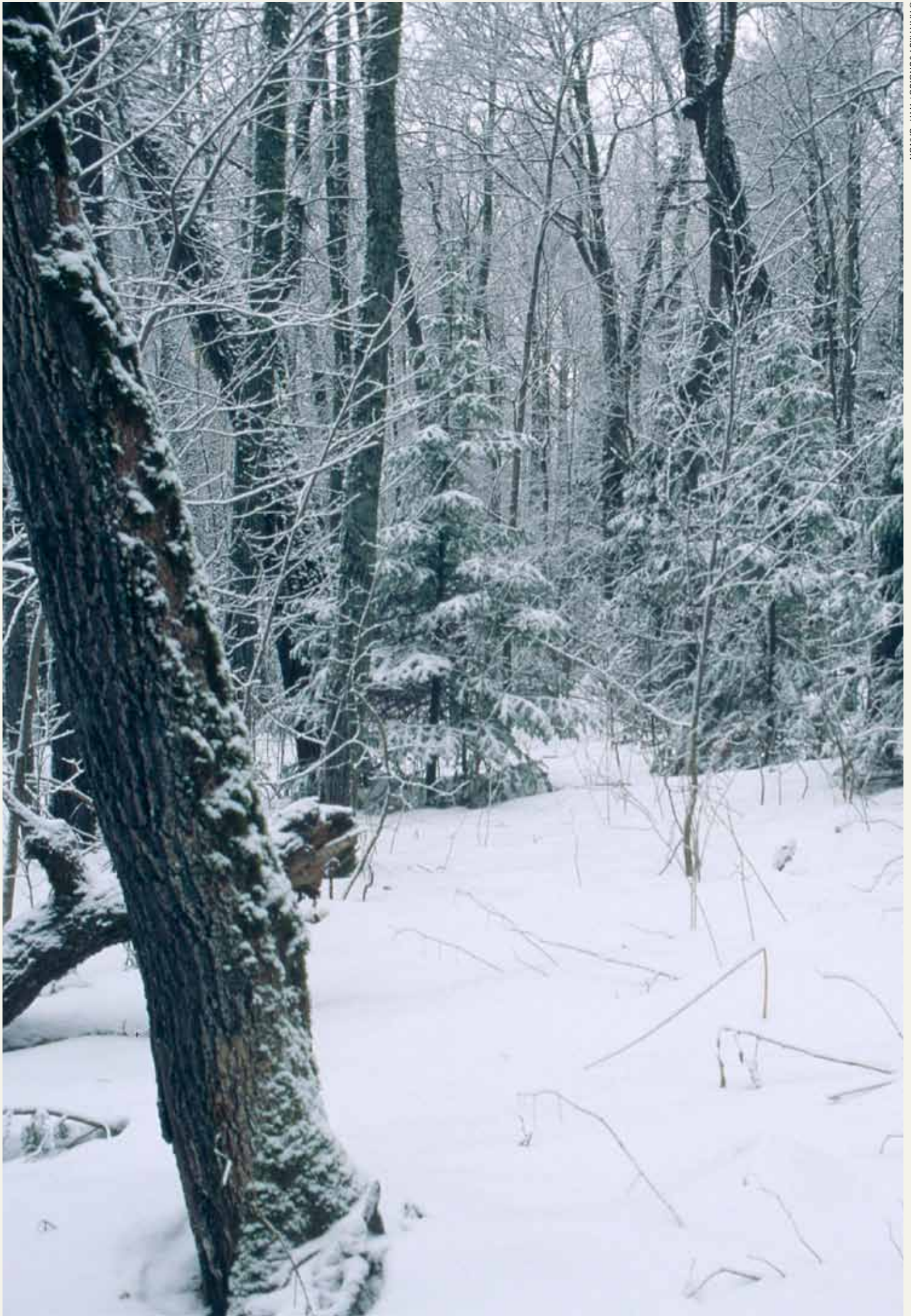
from Mongabay.com: If governments commit to REDD+, the international programme to save forests, deforestation could be nearly zero in less than a decade, argues WWF's Living Forests Report. Read more at: <http://news.mongabay.com>

Markets drive conservation in Central Africa

Certification has shown that commercial forestry can co-exist with conservation objectives in the Congo Basin, according to conclusions reached at an international seminar recently organised in Madrid by the GFTN in cooperation with Spain's Ministry of Environment, Rural and Marine Affairs. Read more at: <http://gftn.panda.org/newsroom>

Forest gives rise to village bank

The Kaya Kinondo forest of Kwale, Kenya, is awash with all the beauty and splendour a coastal forest should have. It's one of the oldest forests on Kenya's south coast. Rare bird and plant species populate this awesome ecosystem, along with huge indigenous trees that are imposing in nature and magnificent in splendour. Read more at: <http://gftn.panda.org/newsroom/?202371/Forest-gives-rise-to-village-bank>



OTHER WWF/ FORESTS NEWS

Economic slowdown leads to the pulping of Latvia's forests

From Mongabay.com: The economic crisis has pushed many countries to scramble for revenue and jobs in tight times, and Latvia is no different. Facing tough circumstances, the country turned to its most important and abundant natural resource – forests. Read more at: <http://news.mongabay.com>

Indonesia to set aside 45% of Kalimantan for conservation

From Mongabay.com: President Susilo Bambang Yudhoyono has recently announced a regulation that would protect 45% of Kalimantan, the Indonesian part of Borneo, according to his office. Read more at: <http://news.mongabay.com>

Levi Strauss enters APP row over ties to rainforest destruction

From Rainforest Action Network: Levi Strauss & Company's recent public release of its revamped forest products purchasing policy ensures it is not sourcing from the world's endangered forests. The company's policy makes it the latest major brand that will not be doing business with Asia Pulp and Paper (APP) due to APP's ongoing involvement in rainforest destruction and human rights abuses in Indonesia. Read more at: <http://ran.org/>

TFT helps Indonesians with legality

From TTJ Online: The Forest Trust (TFT) has helped steer another three Indonesian forest products companies to third-party legality verification. Read more at: <http://www.ttjonline.com>

Violent teak forests dispute resolved

From TTJ Online: A long-running violent dispute between the world's largest teak producer and Indonesian forest communities has been resolved, resulting in the re-certification of two Indonesian forest districts by the FSC. Read more at: www.ttjonline.com

NGO dissatisfied by ecolabel investigation

From FERN.org: Paper made by a subsidiary of Asia Pulp and Paper has been cleared of breaching EU ecolabel criteria. But forestry NGO FERN, which brought the original complaint, says its concerns have not been fully addressed. Read more at: www.fern.org

Major illegal logging operation disrupted

From The Jakarta Globe: The police's special crimes unit has disrupted an illegal logging syndicate with the potential to cause significant damage in the Kubu Raya district of West Kalimantan. Read more at: www.thejakartaglobe.com/news/major-illegal-logging-operation-disrupted/478996

US pledges \$450m to Indonesia for green economic growth

From Mongabay.com: The US has pledged more than \$450 million towards 'green growth' in Indonesia, reports the State Department. Read more at: <http://news.mongabay.com>

War of words between Greenpeace and APP over deforestation allegations

From Mongabay.com: Greenpeace and Asia Pulp & Paper are locked in a heated battle over allegations that APP products contain fibre sourced from the destruction of forests in Indonesia.

Governments need to deal with corruption to curb illegal logging

From CIFOR Forests Blog: The fight to curb rampant illegal logging in the Asia-Pacific region has come a long way in the past decade. But governments need to deal with corruption which continues to impede the sustainable supply of forest products. Read more at: <http://blog.cifor.org/4764/governments-need-to-deal-with-corruption-to-further-curb-illegal-logging/>

Community struggles to save threatened forests in Indonesia

From EIA: It's a scene that occurs all too often in the forests of Indonesia: local communities facing intimidation from plantation companies, backed by local government officials, which want to clear forest land to make way for palm oil production. Read more at: www.eia-international.org/community-struggles-to-protect-its-threatened-forests-in-indonesia

Ghana: Forestry sector policy review under way

From allAfrica.com: Ghana's Ministry of Lands and Natural Resources is currently reviewing one of the sector's major policies the 1994 Forest and Wildlife Policy. Read more at: <http://allafrica.com/stories/201201131442.html>

Cameroon: Desertification - government steps up reforestation efforts

From allAfrica.com: More than 100,000 trees were planted in 2010 in Cameroon's bid to check the consequences of increasing deforestation. Read more at: <http://allafrica.com/stories/201111211768.html>

Deforestation: Nigeria ranked worst in the world

From thisdaylive.com: The International Institute of Tropical Agriculture (IITA) has ranked Nigeria as the worst country in the world for deforestation. Read more at: www.thisdaylive.com/articles/deforestation-nigeria-ranked-worst-in-the-world/103321

Sixty per cent of local market timber is illegal

From VibeGhana.com: Over 60% of all timber products on the Ghanaian domestic market is illegal, causing huge loss of revenue to the State. Read more at: <http://vibeghana.com/2011/12/02/sixty-per-cent-of-local-market-timber-is-illegal>

Metsäliitto trials FSC standard

From TTJ Online: Metsäliitto Group has started testing the Finnish FSC certification standard in some of its forests as part of a move to offer more choice in forest certification. Read more at: <http://www.ttjonline.com>

As Amazon deforestation falls, food production rises

From Mongabay.com: A sharp drop in deforestation has been accompanied by an increase in food production in the Brazilian state of Mato Grosso, reports a new study in the journal Proceedings of the National Academy of Science. The research argues that policy interventions, combined with pressure from environmental groups, have encouraged agricultural expansion in already-deforested areas, rather than driving new forest clearing. Read more at: <http://news.mongabay.com>

Brazil cracks down on illegal logging in Amazon

From AFP: Brazilian authorities on Thursday wrapped up a major operation against illegal logging in the Amazon, seizing thousands of tons of timber amid growing friction over land conflicts in the region. Read more at: www.illegal-logging.info

Amazon deforestation rate at historic low

From terradaily.com: Deforestation of the Amazon rainforest has fallen to its lowest rate on record, dropping 14% compared with the previous survey period. Read more at: www.terradaily.com/reports/Amazon_deforestation_rate_at_historic_low_Brazil_999.html

Deforestation is the Mekong's biggest threat

From China.org: The biggest threat the Mekong River's ecological system faces is not the controversial dam- building projects, as some NGOs claim, but the long-term deforestation of the river basin, a Thai expert contends. Read more at: www.china.org.cn/environment/2011-

New mammal discovered in Vietnam

From Mongabay.com: A new species of omnivorous mammal has been found in Cuc Phuong National Park, Vietnam. Read more at: www.mongabay.com/

Malaysian states may sign VPA at different times

From TTJ Online: Malaysia may look at the possibility of different states within the country making Voluntary Partnership Agreements with the EU at different times, according to the International Tropical Timber Organisation. Read more at: www.ttjonline.com

Malaysia amending its 1984 National Forestry Act

From Bernama.com: The Malaysian government is amending the National Forestry Act 1984 as an aggressive step to eradicate illegal logging in the country. Read more at: www.bernama.com

UK commercial forests values surge 34% in 2011

From TTJ Online: UK commercial forest values have surged 34% in 2011, despite the stagnant economy and wider European economic concerns, according to a new report. Read more at: <http://www.ttjonline.com/>

FSC UK awards

FSC UK is encouraging nominations for its 2012 outstanding achievement awards. These are presented to organisations or businesses that have worked, through a particular project or activity, to promote responsible forestry in the UK. For more information, call FSC UK on 01686 413916.

China's imports of hardwood chips hit record volume

From Mongabay.com: Chinese pulp mills are importing record amounts of hardwood chips from Vietnam, Thailand and Indonesia, reports the Wood Resource Quarterly, an industry trade journal. Read more at: <http://news.mongabay.com>

Philippines closes illegal sawmills in crackdown

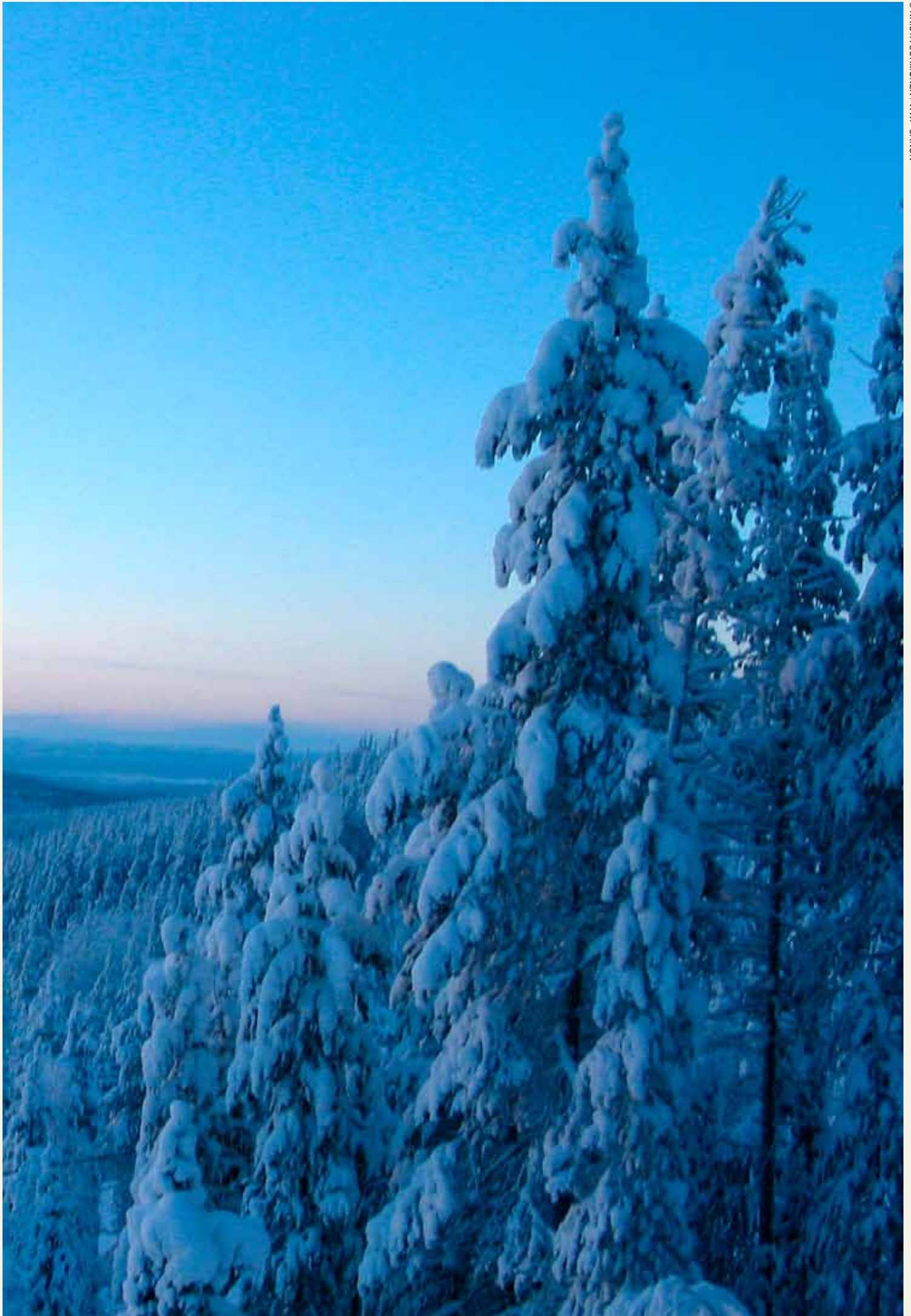
From TTJ Online: The Philippines has closed about 178 sawmills, mini-sawmills and veneer or Read more at: <http://news.mongabay.com>

No premium price for legal timber, says EU

From CIFOR Forests Blog: Wood products certified to have been made from legally sourced timber to meet new EU standards will not necessarily result in a higher price for Asian producers, say EU officials. Read more at: <http://blog.cifor.org/4816/no-premium-price-for-legal-timber-only-market-access-to-eu-says-officials/>

FSC makes changes to comply with EU Timber Regulation

From TTJ Online: The Forest Stewardship Council is developing a due diligence system to enable certificate holders to fully meet the requirements of the EU Timber Regulation. Read more at: www.ttjonline.com



GFTN AT A GLANCE

(as of January 2011)

Quick GFTN Statistics:

- GFTN encompasses more than 272 participating companies, employing 1.5 million people

GFTN participants:

- support 300 local families in community operations;
- represent 18% of all forest products traded globally every year, with combined annual sales of US\$71 billion;
- are engaged in 215 trading deals with other GFTN participants, with an estimated value of US\$105 million; and
- manage more than 21.5 million ha of FSC-certified forests and 6.1 million ha in progress to certification.

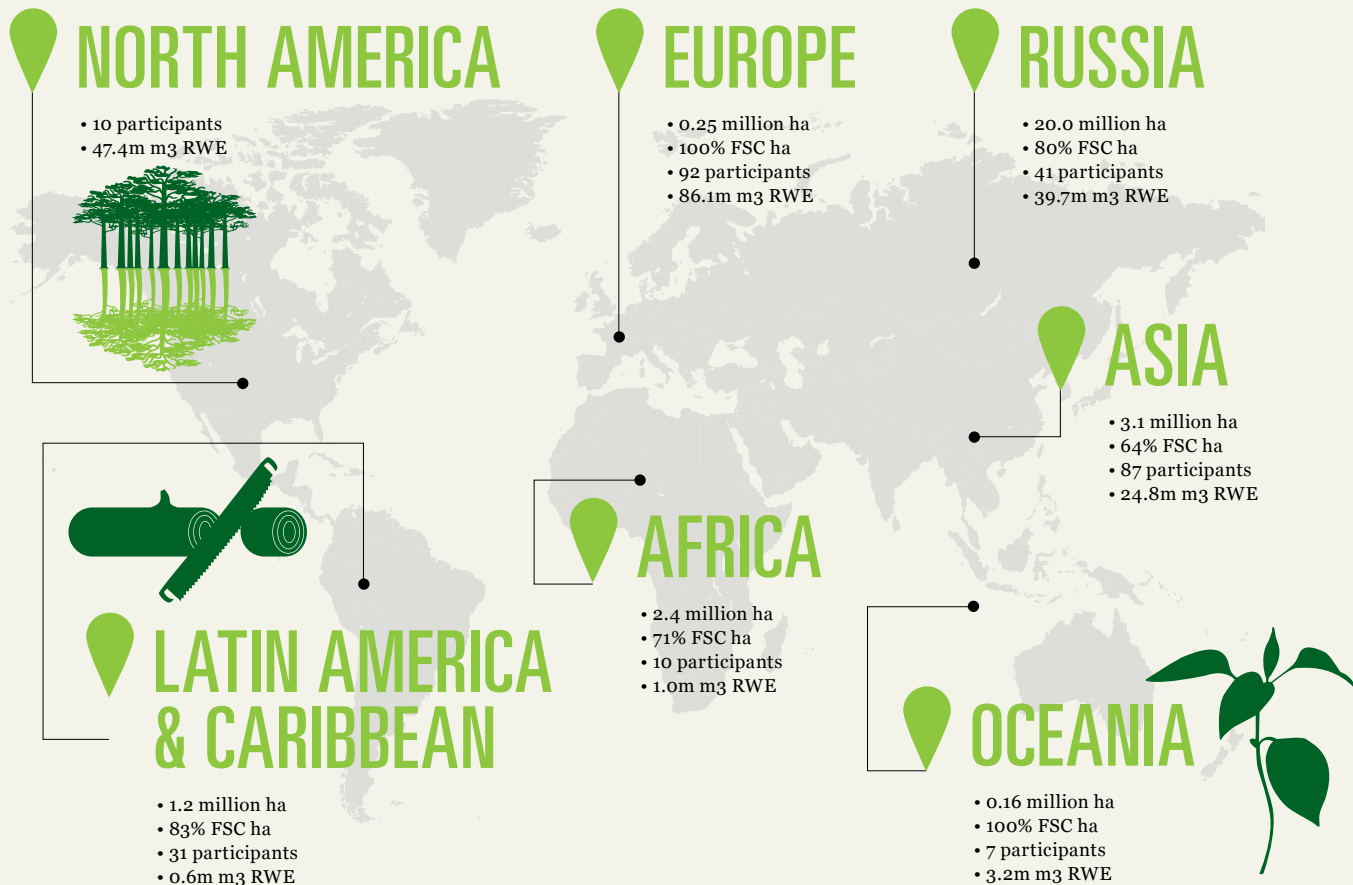
For a list of all the current WWF GFTN participants, visit:

http://gftn.panda.org/about_gftn/current_participants/

GFTN regional/country factsheets: As of February 2011

The GFTN regional/country factsheets give a specific insight into each region or country where GFTN works. You'll find information such as the region/country background, how the GFTN office was established, who the participants are, some quick statistics and a contact person. To download these factsheets, please visit:

www.gftn.panda.org/newsroom/?173121/GFTN-regional-country-factsheets



FSC GLOBAL UPDATES

FSC certified forest area by continent – as of December 2011

Europe: 63,700,010 ha

North America: 60,312,517 ha

South America and Caribbean: 9,425,032 ha

Africa: 7,433,633 ha

Asia: 4,731,021 ha

Oceania: 2,229,591 ha

Total global FSC-certified area: 147,831,804 ha

Number of countries: 80

Total number of forest management certificates: 1,078

For more information, visit: www.fsc.org/fileadmin/web-data/public/document_center/powerpoints_graphs/facts_figures/2011-11-15-Global-FSC-Certificates-EN.pdf

For maps and data on the FSC; FSC-certified forests by country; regional totals of FSC chain of custody certificates; and regional totals of FSC forest management certificates, visit: www.fsc.org

USEFUL WWF DOCUMENTS AND REPORTS

Framework for Assessing Legality of Forestry Operations, Timber Processing and Trade

WWF & TRAFFIC, December 2011

By providing information on a forest-focused subset of applicable laws and regulations in a clear and accessible manner, this legality framework can help both regulators and companies to verify that timber and other forest products contribute to sustainable forest management.

Download this report at: <http://gftn.panda.org/newsroom/?202483/Framework-for-Assessing-Legality-of-Forestry-Operations-Timber-Processing-and-Trade>



WWF GFTN-UK annual report 2010-11

WWF, September 2011

This is WWF GFTN-UK's seventh annual report, which covers the management, activities and achievements of its members in 2010-11.

Download this report at: http://www.wwf.org.uk/what_we_do/safeguarding_the_natural_world/forests/responsible_forestry_and_trade/forest_trade_network/ftn_links.cfm?5242/WWF-GFTN-UK-Annual-Report-201011



WWF GFTN annual report 2010

WWF, February 2011

As we move in to GFTN's 20th year, it is only right we pause to reflect on where we have come and where we are going.

Download this report at: <http://www.gftn.panda.org/newsroom/>

Updated assessment and statement on PEFC from WWF International

WWF, September 2011

http://wwf.panda.org/what_we_do/footprint/forestry/certification/which_system

Woods from Peru: a catalogue of Peru's lesser-known timber species

WWF, June 2011

Woods from Peru is a catalogue of 40 Peruvian Amazon lesser-known timber species. It provides details such as wood characteristics, technical advice and what they can be used for.

Download this report at: <http://gftn.panda.org/resources>

Check your paper database

WWF, January 2011

This tool rates the environmental quality of the paper-making process for a given product, including how well forests supplying fibre are managed, use of recycled fibre, fossil CO₂ emissions, waste going to landfill and water pollution from mills. The fibre in all papers featured on the audited list on the website must come from known, legal sources. Paper products posted on the official list have been audited by third-party certification bodies to ensure high credibility.

Find out more at: <http://checkyourpaper.panda.org/>



GFTN's guide to legal and responsible sourcing

WWF, June 2010

Since the GFTN first published its Guide to Responsible Purchasing of Forest Products more than five years ago, followed by the closely associated Keep It Legal manual, there have been numerous developments in international policy and trade.

Interact with the report at: <http://sourcing.gftn.panda.org/>



Exporting in a shifting legal landscape

WWF, June 2010

GFTN's guide to legal exports, Exporting in a Shifting Legal Landscape, is aimed at companies that export, or intend to export, forest products to the US. It is designed to allow them to assess their own performance and offers advice on how they can meet the needs of their customers in the US – who are required to know that the forest products they import have been legally harvested and traded.

Download this report at: www.gftn.panda.org/resources/tools/



USEFUL WEBSITES

Eyes on the forest

<http://www.eyesontheforest.or.id/>

A coalition of three local environmental organisations in Riau, Sumatra: WWF-Indonesia's Tesso Nilo Programme, Jikalahari (Forest Rescue Network Riau) and Walhi Riau (Friends of the Earth Indonesia).

FSC certificate and product search database

www.fsc-info.org

The FSC certificate search site enables users to verify the status of FSC-registered certificates. The information is managed directly by the FSC-accredited certification bodies. Information on certificates is now available in near real-time.

FSC global risk assessment

<http://www.globalforestregistry.org/>

This provides information about the risk of sourcing controversial wood from more than 150 countries. It is under development by NEPCon, in cooperation with the Forest Stewardship Council and the Rainforest Alliance. It is especially targeted at FSC-certified companies which verify that they don't source non-FSC-certified material from controversial sources.

FSC UK product and supplier database

www.fsc-uk.org/products/search.aspx

This contains an ever-expanding range of FSC-certified organisations and authorised retailers (but not all) in the UK. It should not be used for checking the validity of certificates, but can be used to search for FSC-certified products and suppliers in the UK.

FSC UK

www.fsc-uk.org

For information regarding FSC issues in the UK, or for advice on FSC standards, contact the FSC-UK advisory service at: info@fsc-uk.org

IUCN Red List of Threatened Species

www.iucnredlist.org/

Illegal logging

www.illegal-logging.info

This Chatham House site is a central point of information on all aspects of the international debate on controlling illegal logging and other forest crimes. It contains summaries of the key issues and documents, and links to other relevant sites.

One Planet Future

wwf.org.uk/what_we_do/campaigning

WWF's One Planet Future campaign shows how individuals, governments and business all have their part to play in making sure we are living within the means of the planet's finite natural resources.

Transparency International

<http://www.transparency.org/>

Transparency International's 2010 global corruption barometer presents the main findings of a public opinion survey that explores the public's views of corruption, as well as experiences of bribery around the world.

WWF International forest news and publications

www.panda.org/about_our_earth/about_forests/forest_news_resources

WWF forest position statements

www.panda.org/what_we_do/how_we_work/conservation/forests/publications/position_papers

WWF GFTN-UK

<http://www.wwf.org.uk/ftn>

WWF Global Forest & Trade Network

<http://www.gftn.panda.org/>

This website includes links to the GFTN's Interactive Guide to Legal and Responsible Sourcing

WWF-UK forest research information

www.wwf.org.uk/what_we_do/safeguarding_the_natural_world/forests/index.cfm

Illegal logging in numbers

€10-15 BILLION

The cost per year of illegal logging to timber producing economies.

93%

93% of EU citizens think it's important that wood products are legally harvested and traded.



JULY 2010

European Parliament votes 644-25 in favour of a law to ban illegal timber from the EU market.

37

Now with 37 members, the GFTN-UK aims to improve global forest management using the purchasing power and influence of UK business.'



Why we are here

To stop the degradation of the planet's natural environment and to build a future in which humans live in harmony with nature.

wwf.org.uk