

Water pollution test kit

Invertebrates in our rivers and streams are good indicators of water pollution levels. Some can only live in very clean water. Others can survive even when the water is very polluted.

These cards show universal indicators of water quality and provide a quick and easy means of monitoring water pollution in Northern Ireland's rivers



Instructions

1. In the river or stream you wish to monitor, find a stone roughly the same size as your hand.
2. Pick it up and turn it over to see the invertebrates living on it
3. Try to match these to the pictures on the cards
4. If you find invertebrates from all of the cards OR at least one from the **GREEN** cards *the water is very clean*
5. If you find no invertebrates from the green cards but at least one from the **ORANGE** cards *the water is moderately clean*
6. If you find invertebrates shown only on the **RED** cards *the water is polluted*
7. On the cards each set of invertebrates has been given a score. Work out the average score of your samples. The higher the overall score, the cleaner the river or stream

Caution

Children should never go to a river without adult supervision

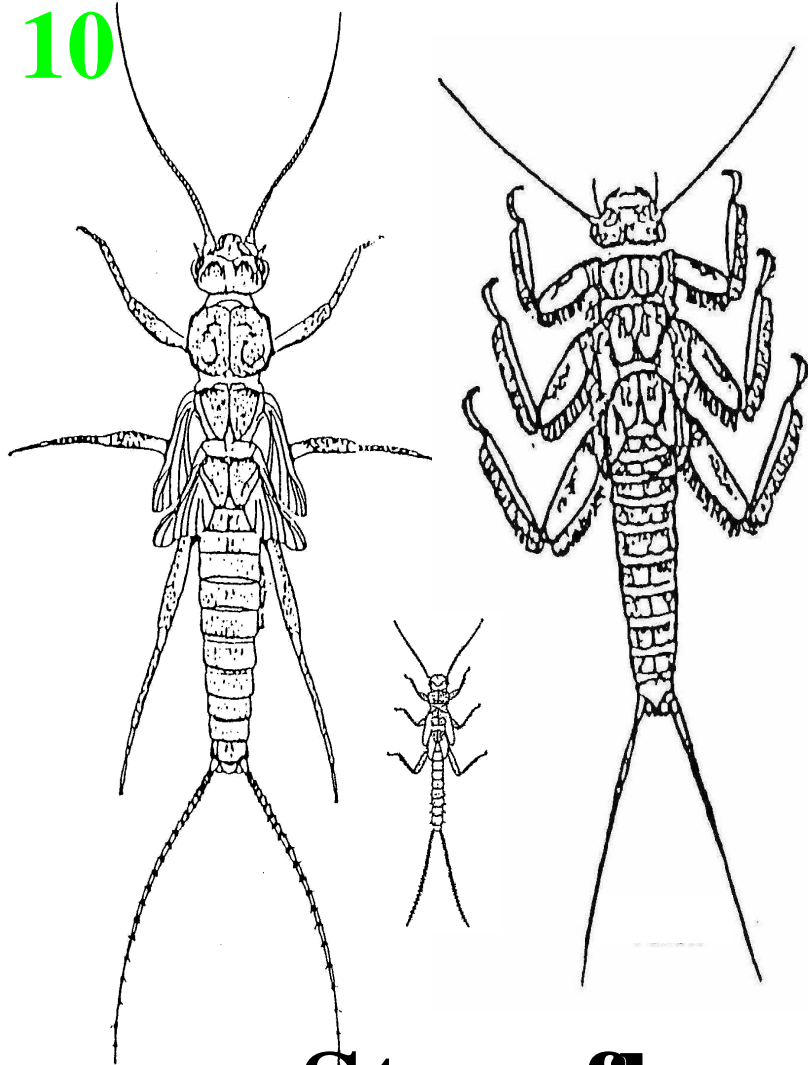
Never wade more than ankle deep in a river

Never enter a river that is in flood

Always wash your hands after looking at insects in the water

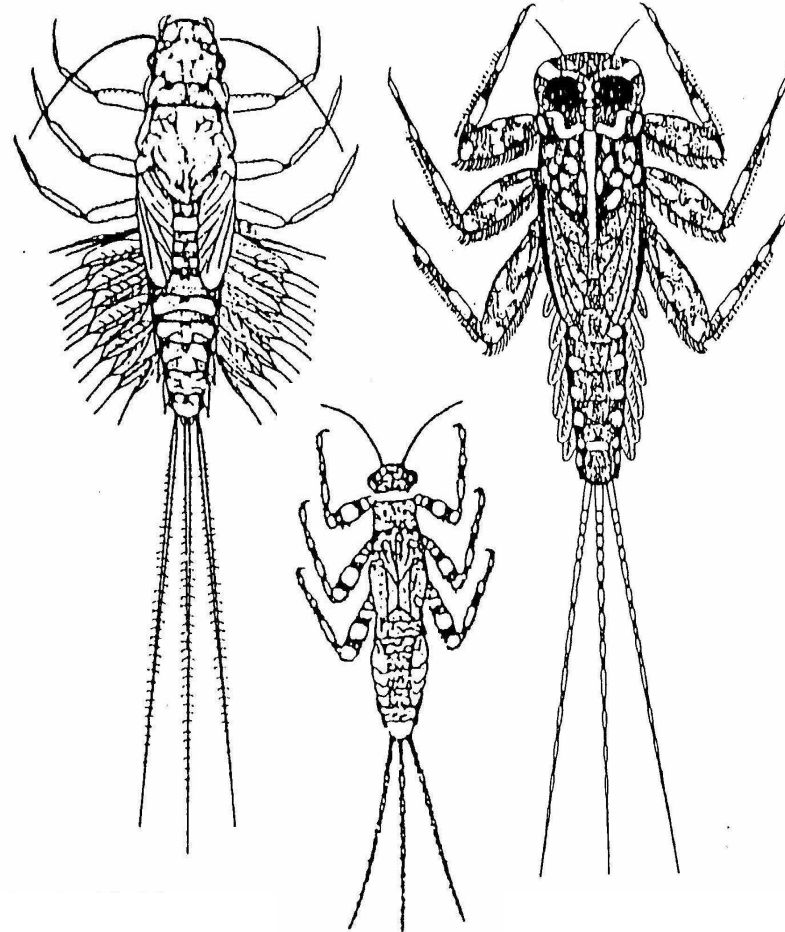
Extremely Sensitive to Pollution

10



Stonefly

10



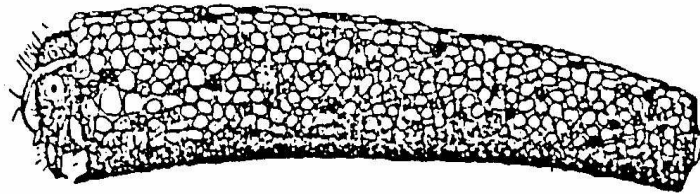
Olive/Mayfly

Very Good Water

Extremely Sensitive to Pollution

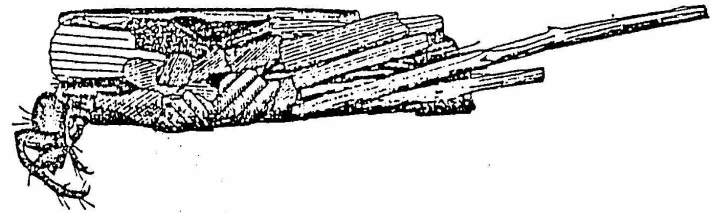
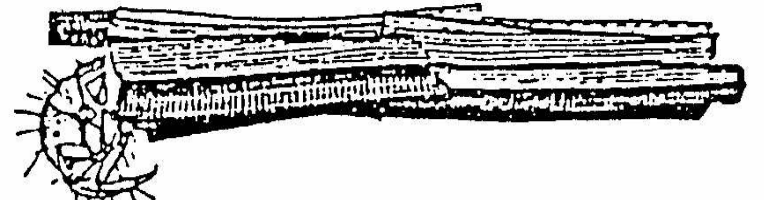
Very Good Water

10



Cased Caddis

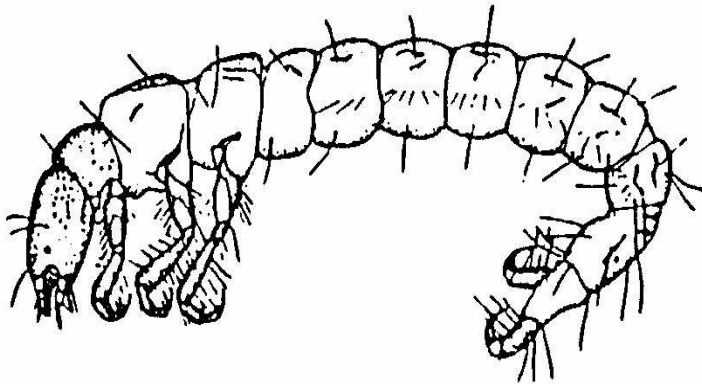
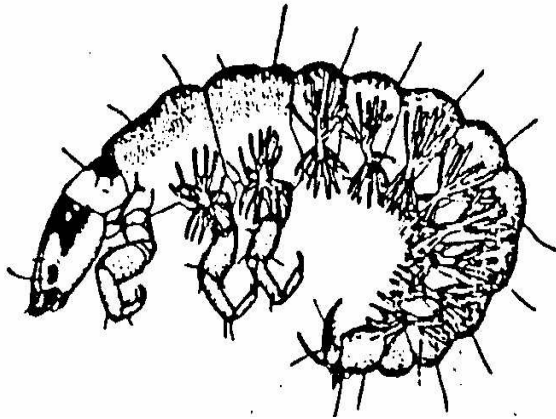
7



Cased Caddis

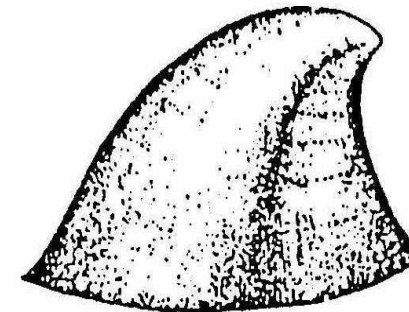
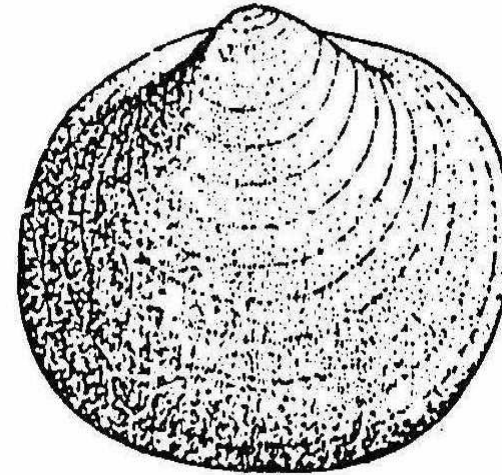
Less Sensitive to Pollution

7



Case-less Caddis

6



Mussels

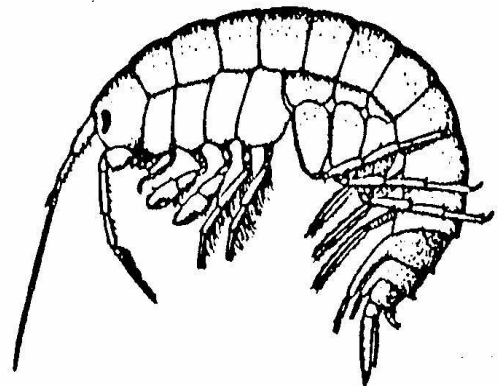
Good Water

Less Sensitive to Pollution

6

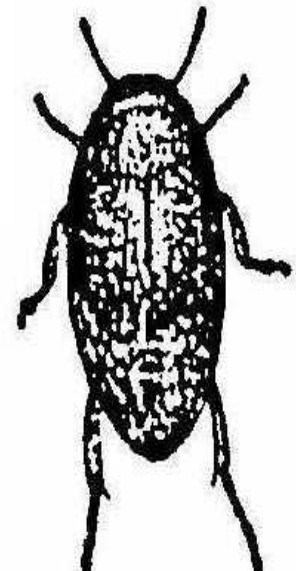
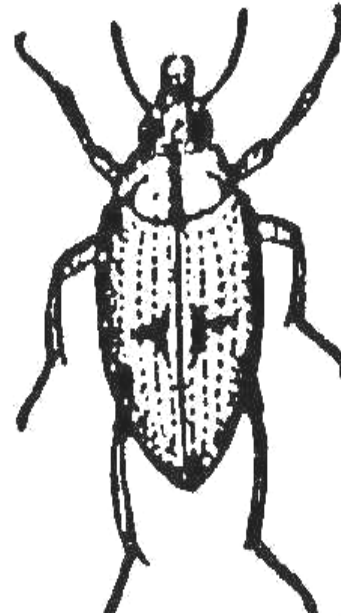


Cased Caddis



Shrimp

5

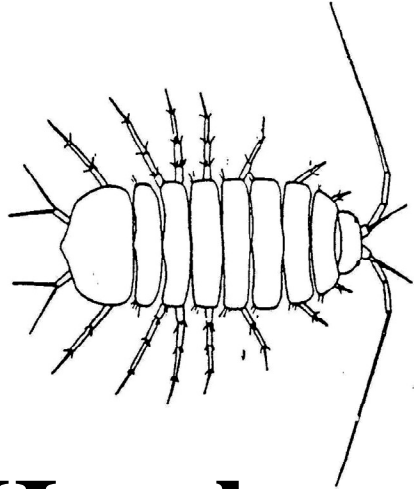


Beetles

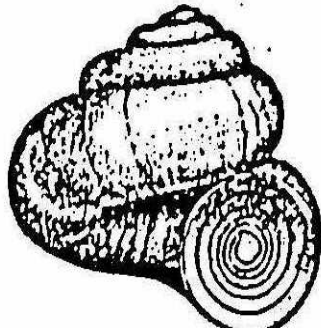
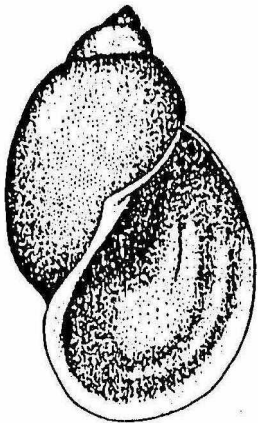
Good Water

Pollution Tolerant

3

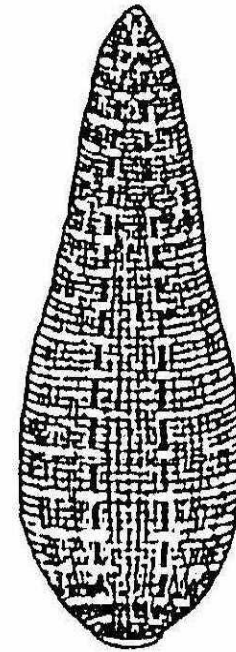
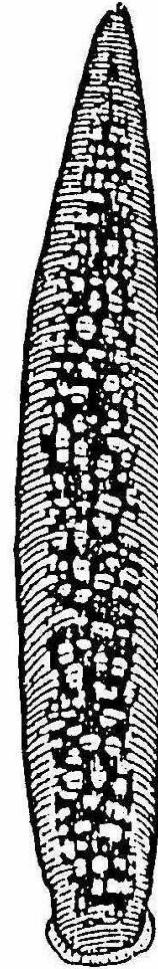


Hog-louse



Snails

3

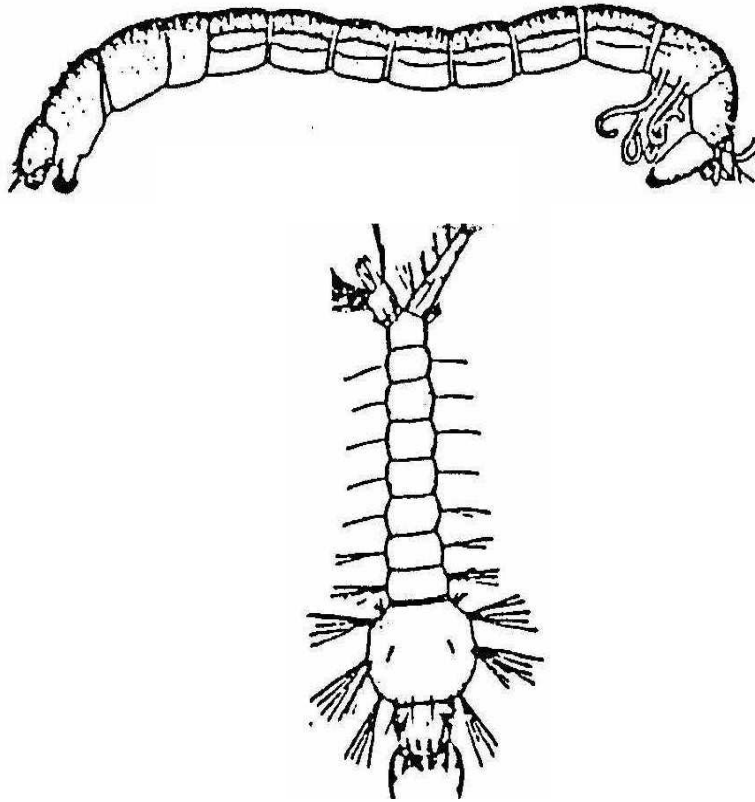


Leeches

Poor Water

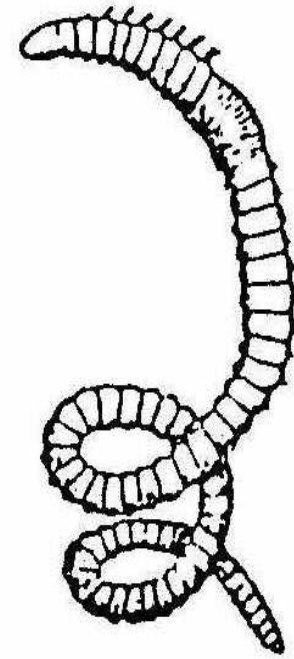
Pollution Tolerant

2



Midge Larvae

1



Worm

Poor Water